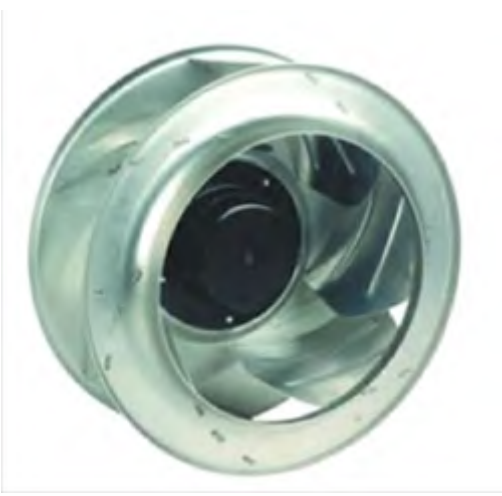


## $\Phi$ 310mm DC 离心风机 DC centrifugal fans

**CE RS**

### General Specifications

- ⌚ Material ----- Impeller:Sheet aluminium  
Pillow:Die-Cast Aluminum
- ⌚ Lead Wire ----- + Red - Black (Sensor) Yellow (Control) Brown
- ⌚ Life time -----50000 Hours Ball bearing
- ⌚ Storage Temperatur--- -25°C ~ +70°C (Non-condensing)
- ⌚ Bearing Type----- Ball Bearings
- ⌚ Speed Range-----  $\pm$ 5%
- ⌚ Part Numbering System



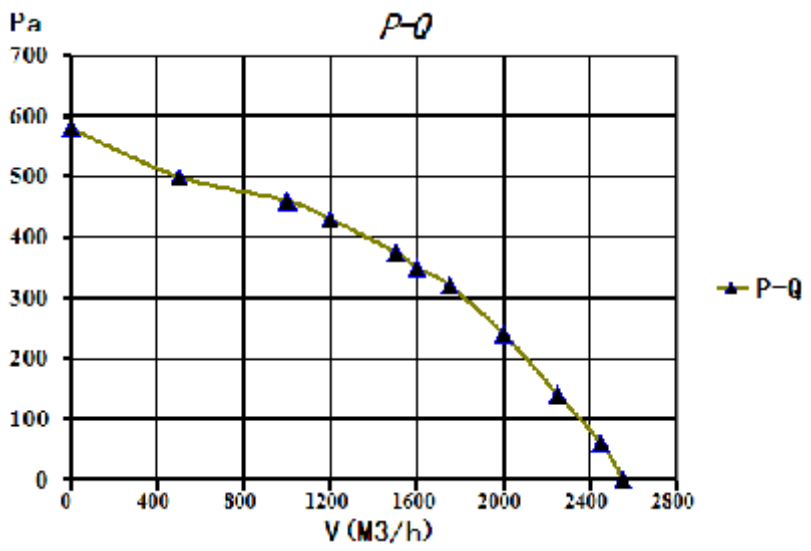
SFD-KF310B48H- **B R 1**

Waterproof level:0=IP54,1=IP55,2=IP68  
 Sensor: 0=no,R=RD sensor ,F=FG sensor ,P=PWM sensor ,T=Temperature sensor  
 Bearing:S=sleeve bearing,B=ball bearing

### $\Phi$ 310mm 后向 backward curved

Model No.	Rated Voltage	Rated Current	Rated Input	Speed	Maximum Air Flow		Max.Static Pressure	Noise
	VDC	AMP	Watt	R.P.M	M3/h	CFM	Pa	dB-A
SFD-KF310B48H	48	4.4	212	1900	2550	1506.5	580	70

### Air Flow-Static Pressure Characteristics



### Dimensions(unit:mm\inch)

